

9Mb DDR SRAM

MT57V256H36P

FEATURES

- Fast cycle times: 3.3ns, 4ns, 5ns and 6ns
- 256K x 36 configuration
- Pipelined double data rate operation
- Single +2.5V $\pm 0.1V$ power supply (V_{DD})
- Separate isolated output buffer supply (V_{DDQ})
- JEDEC-standard HSTL I/O
- User-selectable trip point with V_{REF}
- HSTL programmable impedance outputs synchronized to optional dual data clocks
- Echo clock outputs
- JTAG boundary scan
- Fully static design for reduced-power standby
- Clock-stop capability
- Common data inputs and data outputs
- Low control pin count
- Internally self-timed, registered LATE WRITE cycle
- Linear burst order with four-tick burst counter
- 13 x 15mm, 1mm pitch, 11 x 15 grid FBGA package
- Full data coherency, providing most current data

OPTIONS

- Clock Cycle Timing
- 3.3ns (300 MHz)
- 4ns (250 MHz)
- 5ns (200 MHz)
- 6ns (167 MHz)

MARKING

-3.3
-4
-5
-6

- Configuration
- 256K x 36

MT57V256H36P

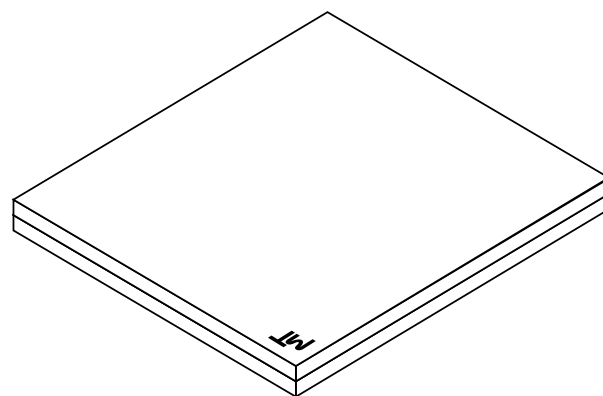
- Package
- 165-pin, 13mm x 15mm FBGA

F

VALID PART NUMBERS

PART NUMBER	DESCRIPTION
MT57V256H36PF-xx	256K x 36, HSTL, DDR, Pipelined

165-Pin FBGA



GENERAL DESCRIPTION

The Micron® DDR Synchronous SRAM employs high-speed, low-power CMOS designs using an advanced 6T CMOS process.

The DDR SRAM integrates a 9Mb SRAM core with advanced synchronous peripheral circuitry and a 2-bit burst counter. All synchronous inputs pass through registers controlled by an input clock pair (K and K#) and are latched on the rising edge of K and K#. The synchronous inputs include all addresses, all data inputs, active LOW load (LD#) and read/write (R/W#). Write data is registered on the rising edges of both K and K#. Read data is driven on the rising edge of C and C# if provided, or on the rising edge of K and K# if C and C# are not provided.

Asynchronous inputs include impedance match (ZQ). Synchronous data outputs (Q) are closely matched to the two echo clocks (CQ and CQ#), which can be used as data receive clocks. Output data clocks (C, C#) are also provided for maximum system clocking and data synchronization flexibility.

Additional write registers are incorporated to enhance pipelined WRITE cycles and reduce READ-to-WRITE turnaround time. WRITE cycles are self-timed.

The device does not utilize internal phase-locked loops and can therefore be placed into a stopped-clock

GENERAL DESCRIPTION (continued)

state to minimize power without lengthy restart times.

Four pins are used to implement JTAG test capabilities: test mode select (TMS), test data-in (TDI), test clock (TCK) and test data-out (TDO). JTAG circuitry is used to serially shift data to and from the SRAM. JTAG inputs use JEDEC-standard 2.5V I/O levels to shift data during this testing mode of operation.

The device can be used in HSTL systems by supplying an appropriate reference voltage (V_{REF}). The device is ideally suited for applications requiring very rapid data transfer by operation in data-doubled mode. The device is also ideal in applications requiring the cost benefits of pipelined CMOS SRAMs and the reduced READ-to-WRITE turnaround times of Late Write SRAMs.

The SRAM operates from a +2.5V power supply, and all inputs and outputs are HSTL-compatible. The device is ideally suited for cache, network, telecom, DSP, and other applications that benefit from a very wide, high-speed data bus.

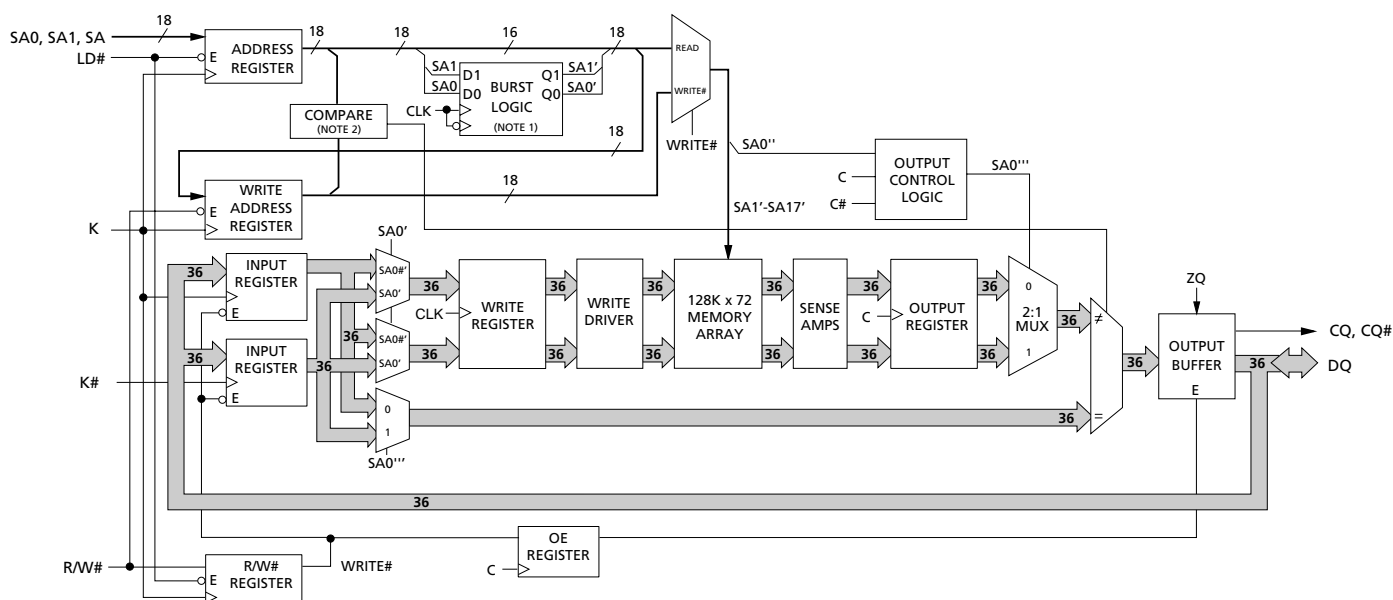
Please refer to Micron's Web site (www.micron.com/mti/msp/html/sramprod.html) for the latest data sheet.

DDR OPERATION

The DDR SRAM enables high performance operation through high clock frequencies (achieved through pipelining) and double data rate mode of operation. At slower frequencies, the DDR SRAM requires a single NO OPERATION (NOP) cycle when transitioning from a READ to a WRITE cycle. At higher frequencies, a second NOP cycle may be required to prevent bus contention. NOP cycles are not required when switching from a WRITE to a READ.

If a READ occurs after a WRITE cycle, address and data for the WRITE are stored in registers. The write information must be stored because the SRAM cannot perform the last WORD WRITE to the array without conflicting with the READ. The data stays in this

FUNCTIONAL BLOCK DIAGRAM 256K x 36



- NOTE:**
1. SA0 and SA1 are advanced in linear burst order at each K and K# rising edge.
 2. The compare width is a 16-bits. The compare is performed only if a WRITE is pending and a READ cycle is requested. If the address matches, data is routed directly to the device outputs, bypassing the memory array.
 3. The functional block diagram illustrates simplified device operation. See truth table, pin descriptions and timing diagrams for detailed information.
 4. CQ, CQ# do not tristate except during some JTAG test modes

GENERAL DESCRIPTION (continued)

register until the next WRITE cycle occurs. On the first WRITE cycle after the READ(s), the stored data from the earlier WRITE will be written into the SRAM array. This is called a POSTED WRITE.

A READ can be made immediately to an address even if that address was written in the previous cycle. During this READ cycle, the SRAM array is bypassed, and data is read instead from the data register storing the recently written data. This is transparent to the user. This feature facilitates system data coherency.

The DDR SRAM differs in some ways from its predecessor, the Claymore DDR SRAM. Single data rate operation is not supported, hence no SD/DD# pin is provided. Only bursts of four are supported. In addition to the echo clocks, two single-ended input clocks are available (C, C#). The SRAM synchronizes its output data to these data clock rising edges if provided. If not present, C and C# must be tied high and output timing is derived from K and K#. No differential clocks are used in this device. This clocking scheme provides greater system tuning capability than Claymore SRAMs and reduces the number of input clocks required by the bus master.

PROGRAMMABLE IMPEDANCE OUTPUT BUFFER

The DDR SRAM is equipped with programmable impedance output buffers. This allows a user to match the driver impedance to the system. To adjust the impedance, an external precision resistor (R_Q) is connected between the ZQ pin and V_{SS}. The value of the resistor must be five times the desired impedance. For example, a 350Ω resistor is required for an output impedance of 70Ω. To ensure that output impedance is

one fifth the value of R_Q (within 10 percent), the range of R_Q is 175Ω to 350Ω. Alternately, the ZQ pin can be connected directly to V_{DD}, which will place the device in a minimum impedance mode.

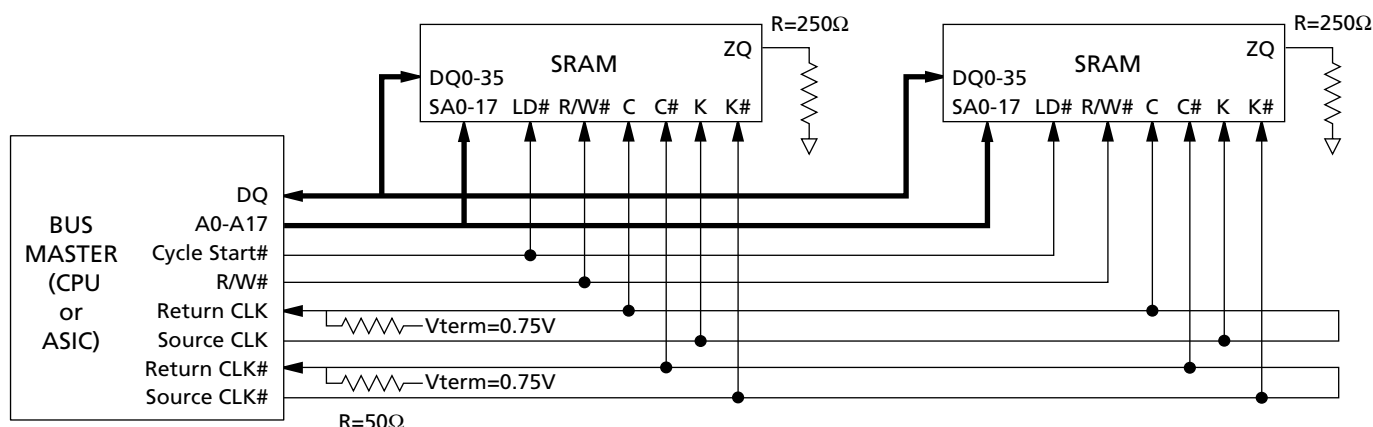
Output impedance updates may be required because variations may occur in supply voltage and temperature over time. The device samples the value of R_Q. An update of the impedance is transparent to the system. Impedance updates do not affect device operation, and all data sheet timing and current specifications are met during an update.

The device will power up with an output impedance set at 50Ω. To guarantee optimum output driver impedance after power-up, the SRAM needs 1,024 cycles to update the impedance. The user can operate the part with fewer than 1,024 clock cycles, but optimal output impedance is not guaranteed.

CLOCKING

The DDR SRAM supports flexible clocking approaches. C and C# may be supplied to the SRAM to synchronize data output across multiple devices, enabling the bus master to receive all data simultaneously. If C and C# are not provided (tied HIGH) K and K# are used as the output timing reference. The echo clocks (CQ and CQ#) provide another alternative for data synchronization. The echo clocks are controlled exactly like the DQ signals except that CQ and CQ# have an additional small delay for easier data capture by the bus master. Echo clocks must be separately received for each SRAM in the system. Use of echo clocks maximizes the available data window for each SRAM in the system.

APPLICATION EXAMPLE



PIN ASSIGNMENT (Top View)
165-Pin FBGA

	1	2	3	4	5	6	7	8	9	10	11
A	CQ#	V _{SS} /SA*	NC/SA*	R/W#	NC	K#	NC	LD#	NC/SA*	V _{SS} /SA*	CQ
B	NC	DQ19	DQ18	SA	NC	K	NC	SA	NC	NC	DQ17
C	NC	NC	DQ20	V _{SS}	SA	SA0	SA1	V _{SS}	NC	DQ15	DQ16
D	NC	DQ22	DQ21	V _{SS}	V _{SS}	V _{SS}	V _{SS}	V _{SS}	NC	NC	DQ14
E	NC	NC	DQ23	V _{DDQ}	V _{SS}	V _{SS}	V _{SS}	V _{DDQ}	NC	DQ12	DQ13
F	NC	DQ25	DQ24	V _{DDQ}	V _{DD}	V _{SS}	V _{DD}	V _{DDQ}	NC	NC	DQ11
G	NC	DQ26	DQ27	V _{DDQ}	V _{DD}	V _{SS}	V _{DD}	V _{DDQ}	NC	NC	DQ10
H	NC	V _{REF}	V _{DDQ}	V _{DDQ}	V _{DD}	V _{SS}	V _{DD}	V _{DDQ}	V _{DDQ}	V _{REF}	ZQ
J	NC	NC	DQ28	V _{DDQ}	V _{DD}	V _{SS}	V _{DD}	V _{DDQ}	NC	DQ9	DQ8
K	NC	NC	DQ29	V _{DDQ}	V _{DD}	V _{SS}	V _{DD}	V _{DDQ}	NC	DQ6	DQ7
L	NC	DQ31	DQ30	V _{DDQ}	V _{SS}	V _{SS}	V _{SS}	V _{DDQ}	NC	NC	DQ5
M	NC	NC	DQ32	V _{SS}	V _{SS}	V _{SS}	V _{SS}	V _{SS}	NC	DQ3	DQ4
N	NC	DQ34	DQ33	V _{SS}	SA	SA	SA	V _{SS}	NC	NC	DQ2
P	NC	NC	DQ35	SA	SA	C	SA	SA	NC	DQ0	DQ1
R	TDO	TCK	SA	SA	SA	C#	SA	SA	SA	TMS	TDI

*Expansion addresses: 9A for 18Mb, 3A for 36Mb, 10A for 72Mb, 2A for 144Mb

PIN DESCRIPTIONS

BGA PINS (x36)	SYMBOL	TYPE	DESCRIPTION
6C 7C 4B, 8B, 5C, 5N-7N, 4P, 5P, 7P, 8P, 3R-5R, 7R-9R	SA0 SA1 SA	Input	Synchronous Address Inputs: These inputs are registered and must meet the setup and hold times around the rising edge of K. Pins 9A, 3A, 10A, and 2A are reserved for the next higher-order address inputs on 18, 36, 72, and 144Mb devices, respectively. SA0 and SA1 are used as the lowest two address bits for BURST READ and BURST WRITE operations. These inputs are ignored when device is deselected or once BURST operation is in progress.
8A	LD#	Input	Synchronous Load: This input is brought LOW when a bus cycle sequence is to be defined. This definition includes address and read/write direction. All transactions operate on a burst of 4 data (two clock periods of bus activity).
4A	R/W#	Input	Synchronous Read/Write Input: When LD# is LOW, this input designates the access type (READ when R/W# is HIGH, WRITE when R/W# is LOW) for the loaded address. R/W# must meet the setup and hold times around the rising edge of K.
6B 6A	K K#	Input	Input Clock: This input clock pair registers address and control inputs on the rising edge of K, and registers data on the rising edge of K and the rising edge of K#. K# is ideally 180 degrees out of phase with K. All synchronous inputs must meet setup and hold times around the clock rising edges.
6P 6R	C C#	Input	Output Clock: This clock pair provides a user controlled means of tuning device output data. The rising edge of C is used as the output timing reference for first and third output data. The rising edge of C# is used as the output reference for second and fourth output data. Ideally, C# is 180 degrees out of phase with C. C and C# may be tied HIGH to force the use of K and K# as the output reference clocks instead of having to provide C and C# clocks. If tied HIGH, C and C# must remain HIGH and not be toggled during device operation.
11H	ZQ	Input	Output Impedance Matching Input: This input is used to tune the device outputs to the system data bus impedance. DQ and CQ output impedance are set to $0.2 \times RQ$, where RQ is a resistor from this bump to ground. Alternately, this pin can be connected directly to V _{DD} , which enables the minimum impedance mode. This pin cannot be connected directly to GND or left unconnected.
10R 11R	TMS TDI	Input	IEEE 1149.1 Test Inputs: JEDEC-standard 2.5V I/O levels. These pins may be left Not Connected if the JTAG function is not used in the circuit.
2R	TCK	Input	IEEE 1149.1 Clock Input: JEDEC-standard 2.5V I/O levels. This pin must be tied to V _{SS} if the JTAG function is not used in the circuit.
2H, 10H	V _{REF}	Input	HSTL Input Reference Voltage: Nominally V _{DD} /2. Provides a reference voltage for the input buffers.

PIN DESCRIPTIONS (continued)

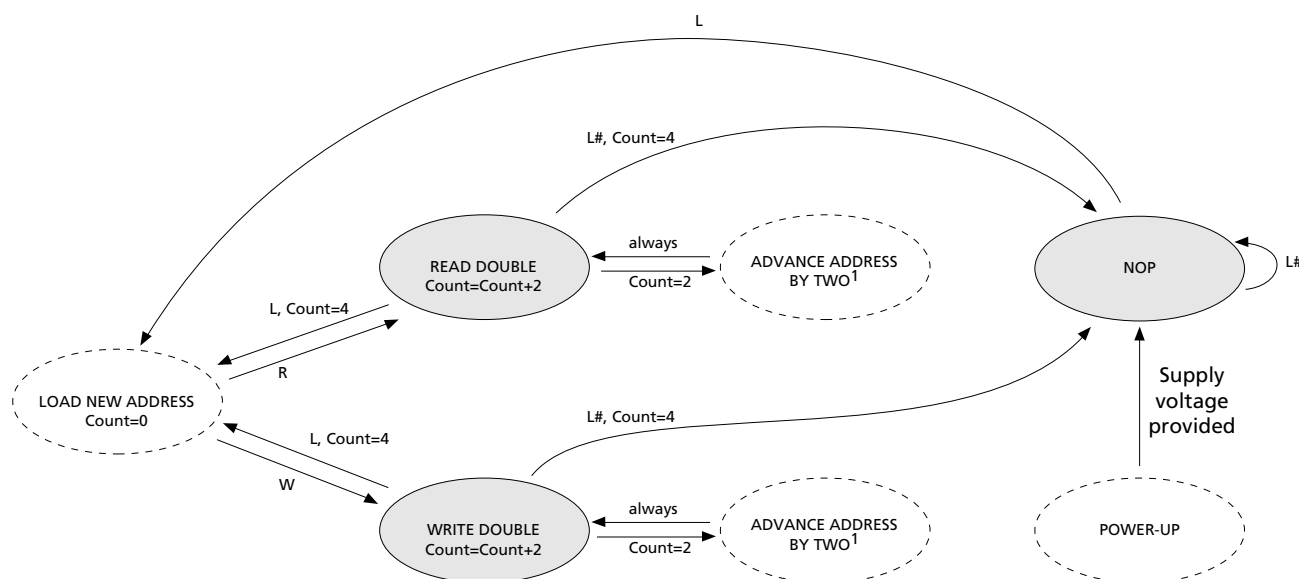
BGA PINS (x36)	SYMBOL	TYPE	DESCRIPTION
10P 11P 11N 10M 11M 11L 10K 11K 11J 10J 11G 11F 10E 11E 11D 10C 11C 11B 3B 2B 3C 3D 2D 3E 3F 2F 2G 3G 3J 3K 3L 2L 3M 3N 2N 3P	DQ0 DQ1 DQ2 DQ3 DQ4 DQ5 DQ6 DQ7 DQ8 DQ9 DQ10 DQ11 DQ12 DQ13 DQ14 DQ15 DQ16 DQ17 DQ18 DQ19 DQ20 DQ21 DQ22 DQ23 DQ24 DQ25 DQ26 DQ27 DQ28 DQ29 DQ30 DQ31 DQ32 DQ33 DQ34 DQ35	Input/ Output	Synchronous Data IOs: Input data must meet setup and hold times around the rising edges of K and K#. Output data is synchronized to the respective C and C# data clocks or to K and K# if C and C# are tied to HIGH.
11A 1A	CQ CQ#	Output	Echo Clock: These outputs provide a timing reference for output data. Output data is tightly matched to the rising edges of CQ and CQ#.
1R	TDO	Output	IEEE 1149.1 Test Output: JEDEC-standard 2.5V I/O level.
5F, 7F, 5G, 7G, 5H, 7H, 5J, 7J, 5K, 7K	V _{DD}	Supply	Power Supply: 2.5V nominal. See DC Electrical Characteristics and Operating Conditions for range.
4E, 8E, 4F, 8F, 4G, 8G, 3H, 4H, 8H, 9H, 4J, 8J, 4K, 8K, 4L, 8L	V _{DDQ}	Supply	Power Supply: Isolated Output Buffer Supply. Nominally 1.5V. See DC Electrical Characteristics and Operating Conditions for range.

PIN DESCRIPTIONS (continued)

BGA PINS (x36)	SYMBOL	TYPE	DESCRIPTION
2A, 10A, 4C, 8C, 4D-8D, 5E-7E, 6F, 6G, 6H, 6J, 6K, 5L-7L, 4M-8M, 4N, 8N	V _{ss}	Supply	Power Supply: GND.
3A, 5A, 7A, 9A, 1B, 5B, 7B, 9B, 10B, 1C, 2C, 9C, 1D, 9D, 10D, 1E, 2E, 9E, 1F, 9F, 10F, 1G, 9G, 10G, 1H, 1J, 2J, 9J, 1K, 2K, 9K, 1L, 9L, 10L, 1M, 2M, 9M, 1N, 9N, 10N, 1P, 2P, 9P	NC	—	No Connect: These signals are not internally connected and may be connected to ground to improve package heat dissipation. For upgrade to 18, 36, 72, and 144Mb DDR devices, pins 9A, 3A, 10A, and 2A are reserved for higher-order address bits, respectively.

LINEAR BURST ADDRESS TABLE

FIRST ADDRESS (EXTERNAL)	SECOND ADDRESS (INTERNAL)	THIRD ADDRESS (INTERNAL)	FOURTH ADDRESS (INTERNAL)
X...X00	X...X01	X...X10	X...X11
X...X01	X...X10	X...X11	X...X00
X...X10	X...X11	X...X00	X...X01
X...X11	X...X00	X...X01	X...X10

BUS CYCLE STATE DIAGRAM


- NOTE:**
1. SA0 and SA1 are internally advanced in accordance with the burst order table. Bus cycle is terminated after burst count = 4.
 2. State transitions: L = (LD# = LOW); L# = (LD# = HIGH); R = (R/W# = HIGH); W = (R/W# = LOW).
 3. State machine control timing sequence is controlled by K.

TRUTH TABLE

OPERATION	LD#	R/W#	K	DQ	DQ	DQ	DQ
WRITE Cycle: Load address, input write data on two consecutive K and K# rising edges	L	L	L→H	DIN(A1) at K(t+1)↑	DIN(A2) at K#(t+1)↑	DIN(A3) at K(t+2)↑	DIN(A4) at K#(t+2)↑
READ Cycle: Load address, read data on two consecutive C and C# rising edges	L	H	L→H	QOUT(A1) at C(t+1)↑	QOUT(A2) at C#(t+1)↑	QOUT(A3) at C(t+2)↑	QOUT(A4) at C#(t+2)↑
NOP: No operation	H	X	L→H	High-Z	High-Z	High-Z	High-Z
STANDBY: Clock stopped	X	X	Stopped	Previous State	Previous State	Previous State	Previous State

- NOTE:**
1. X means "Don't Care." H means logic HIGH. L means logic LOW. ↑ means rising edge; ↓ means falling edge.
 2. Data inputs are registered at K and K# rising edges. Data outputs are delivered at C and C# rising edges except if C and C# are HIGH then Data outputs are delivered at K and K# rising edges.
 3. All control inputs in the truth table must meet setup/hold times around the rising edge (LOW to HIGH) of K. All control inputs are registered during the rising edge of K.
 4. This device contains circuitry that will ensure the outputs will be in High-Z during power-up.
 5. Refer to state diagram and timing diagrams for clarification.
 6. A1 refers to the address input during a WRITE or READ cycle. A2, A3, and A4 refer to the next internal burst address in accordance with the linear burst sequence.
 7. It is recommended that $K = /K\# = C = /C\#$ when clock is stopped. This is not essential but permits most rapid restart by overcoming transmission line charging symmetrically.

ABSOLUTE MAXIMUM RATINGS*

Voltage on V _{DD} Supply	
Relative to V _{SS}	-0.5V to +3.6V
Voltage on V _{DDQ} Supply	
Relative to V _{SS}	-0.5V to V _{DD}
V _{IN}	-0.5V to V _{DD} + 0.5V
Storage Temperature	-55°C to +125°C
Junction Temperature**	+125°C
Short Circuit Output Current	±70mA

*Stresses greater than those listed under “Absolute Maximum Ratings” may cause permanent damage to the device. This is a stress rating only, and functional operation of the device at these or any other conditions above those indicated in the operational sections of this specification is not implied. Exposure to absolute maximum rating conditions for extended periods may affect reliability.

** Junction temperature depends upon package type, cycle time, loading, ambient temperature and airflow. See Micron Technical Note TN-05-14 for more information.

DC ELECTRICAL CHARACTERISTICS AND OPERATING CONDITIONS

(+20°C ≤ T_J ≤ +110°C; +2.4V ≤ V_{DD} ≤ +2.6V unless otherwise noted)

DESCRIPTION	CONDITIONS	SYMBOL	MIN	MAX	UNITS	NOTES
Input High (Logic 1) Voltage		V _{IH}	V _{REF} + 0.1	V _{DDQ} + 0.3	V	3, 4
Input Low (Logic 0) Voltage		V _{IL}	-0.3	V _{REF} - 0.1	V	3, 4
Clock Input Signal Voltage		V _{IN}	-0.3	V _{DDQ} + 0.3	V	3, 4
Input Leakage Current	0V ≤ V _{IN} ≤ V _{DDQ}	I _{LI}	-5	5	μA	
Output Leakage Current	Output(s) disabled, 0V ≤ V _{IN} ≤ V _{DDQ} (Q)	I _{LO}	-5	5	μA	
Output High Voltage	I _{OH} ≤ 0.1mA	V _{OH} (LOW)	V _{DDQ} - 0.2	V _{DDQ}	V	3, 5, 7
	Note 1	V _{OH}	V _{DDQ} /2 - 0.08	V _{DDQ} /2 + 0.08	V	3, 5, 7
Output Low Voltage	I _{OL} ≤ 0.1mA	V _{OL} (LOW)	V _{SS}	0.2	V	3, 5, 7
	Note 2	V _{OL}	V _{DDQ} /2 - 0.08	V _{DDQ} /2 + 0.08	V	3, 5, 7
Supply Voltage		V _{DD}	2.4	2.6	V	3
Isolated Output Buffer Supply		V _{DDQ}	1.4	1.6	V	3, 6
Reference Voltage		V _{REF}	0.68	0.9	V	3

- NOTE:**
1. Outputs are impedance-controlled. |I_{OH}| = (V_{DDQ}/2)/(R_Q/5) for values of 175Ω ≤ R_Q ≤ 350Ω.
 2. Outputs are impedance-controlled. I_{OL} = (V_{DDQ}/2)/(R_Q/5) for values of 175Ω ≤ R_Q ≤ 350Ω.
 3. All voltages referenced to V_{SS} (GND).
 4. Overshoot: V_{IH} (AC) ≤ V_{DD} + 0.7V for t ≤ 'KHKH/2
 Undershoot: V_{IL} (AC) ≥ -0.5V for t ≤ 'KHKH/2
 Power-up: V_{IH} ≤ V_{DDQ} + 0.3V and V_{DD} ≤ 2.4V and V_{DDQ} ≤ 1.4V for t ≤ 200ms
 During normal operation, V_{DDQ} must not exceed V_{DD}. Control input signals may not have pulse widths less than 'KHKH (MIN) or operate at cycle rates less than 'KHKH (MIN).
 5. AC load current is higher than the shown DC values. AC I/O curves are available upon request.
 6. For higher V_{DDQ} voltages, contact factory for product information.
 7. HSTL outputs meet JEDEC HSTL Class I and Class II standards.

I_{DD} OPERATING CONDITIONS AND MAXIMUM LIMITS

 (+20°C ≤ T_J ≤ +110°C; V_{DD} = MAX unless otherwise noted)

DESCRIPTION	CONDITIONS	SYMBOL	TYP	MAX					UNITS	NOTES
				-3.3	-4	-5	-6			
Operating Supply Current: DDR	All inputs ≤ V _{IL} or ≥ V _{IH} ; Cycle time ≥ t _{KHKH} (MIN); Outputs open	I _{DD}	TBD	550	450	350	300		mA	1, 2, 3
Standby Supply Current: NOP	t _{KHKH} = t _{KHKH} (MIN); Device in NOP state; All addresses/data static	I _{SB1}	TBD	260	230	200	170		mA	2, 4
Stop Clock Current	Cycle time = 0; Inputs static	I _{SB}	TBD	75	75	75	75		mA	2
Output Supply Current: DDR (For information only)	C _L = 15pF	I _{DDQ}	-	122	101	81	68		mA	5

- NOTE:**
1. I_{DD} is specified with no output current and increases with faster cycle times. I_{DDQ} increases with faster cycle times and greater output loading. Typical value is measured at 6ns cycle time.
 2. Typical values are measured at V_{DD} = 2.5V, V_{DDQ} = 1.5V and temperature = 25°C.
 3. Operating supply currents and burst mode currents are calculated with 50 percent READ cycles and 50 percent WRITE cycles.
 4. NOP currents are valid when entering NOP after all pending READ and WRITE cycles are completed.
 5. Average I/O current and power is provided for information purposes only and is not tested. Calculation assumes that all outputs are loaded with C_L (in farads), half of outputs toggle at each transition (n=36), V_{DDQ}=1.5V and uses the equations: Average I/O Power as dissipated by the SRAM is:

$$P = 0.5 * n * f * C_L * V_{DDQ}^2$$
 Average I_{DDQ} = $n * f * C_L * V_{DDQ}$

CAPACITANCE

DESCRIPTION	CONDITIONS	SYMBOL	TYP	MAX	UNITS	NOTES
Address/Control Input Capacitance	$T_A = 25^\circ\text{C}; f = 1 \text{ MHz}$	C_i	4	5	pF	1
Input/Output Capacitance (DQ)		C_o	6	7	pF	1
Clock Capacitance		C_{CK}	5	6	pF	1

THERMAL RESISTANCE

DESCRIPTION	CONDITIONS	SYMBOL	TYP	UNITS	NOTES
Junction to Ambient (Airflow of 1m/s)	Soldered on a 4.25 x 1.125 inch, 4-layer printed circuit board	θ_{JA}	25	$^\circ\text{C/W}$	1, 2
Junction to Case (Top)		θ_{JC}	10	$^\circ\text{C/W}$	1
Junction to Pins (Bottom)		θ_{JB}	12	$^\circ\text{C/W}$	1, 3

NOTE:

1. This parameter is sampled.
2. Average thermal resistance between the die and the case top surface per MIL SPEC 883 Method 1012.1.
3. Junction temperature is a function of total device power dissipation and device mounting environment. Measured per SEMI G38-87.

AC ELECTRICAL CHARACTERISTICS

(Notes 4, 5) (+20°C ≤ T_j ≤ 110°C; +2.4V ≤ V_{DD} ≤ +2.6V)

DESCRIPTION	SYMBOL	-3.3		-4		-5		-6		-		UNITS	NOTES
		MIN	MAX	MIN	MAX	MIN	MAX	MIN	MAX	MIN	MAX		
Clock													
Clock cycle time (K, K#, C, C#)	^t KHKH	3.3		4.0		5.0		6.0				ns	
Clock HIGH time (K, K#, C, C#)	^t KHKL	1.3		1.6		2.0		2.4				ns	
Clock LOW time (K, K#, C, C#)	^t KLKH	1.3		1.6		2.0		2.4				ns	
Clock to clock# (K↑→K#↑, C↑→C#↑)	^t KHK#H	1.55	1.75	1.9	2.1	2.4	2.6	2.8	3.2			ns	
Clock to data clock (K↑→C↑, K#↑→C#↑)	^t KHCH	0	0.8	0.0	1.0	0.0	1.5	0.0	2.0			ns	
Output Times													
C, C# HIGH to output valid	^t CHQV		1.8		2.2		2.4		3.0			ns	
C, C# HIGH to output hold	^t CHQX	0.8		0.8		0.8		0.8				ns	
C HIGH to output High-Z	^t CHQZ		1.8		2.2		2.4		3.0			ns	6, 7
C HIGH to output Low-Z	^t CHQX1	0.8		0.8		0.8		0.8				ns	6, 7
C, C# HIGH to CQ, CQ# HIGH	^t CHCQH	0.8	2.0	0.8	2.4	0.8	2.6	0.8	3.2			ns	
CQ, CQ# HIGH to output valid	^t CQHQV		0.2		0.2		0.2		0.3			ns	
CQ, CQ# HIGH to output hold	^t CQHQX	-0.5		-0.5		-0.5		-0.6				ns	
CQ HIGH to output High-Z	^t CQHQZ		0.2		0.2		0.2		0.3			ns	6, 7
CQ HIGH to output Low-Z	^t CQHQX1	-0.5		-0.5		-0.5		-0.6				ns	6, 7
Setup Times													
Address valid to K rising edge	^t AVKH	0.5		0.5		0.6		0.7				ns	2
Control inputs valid to K rising edge	^t IVKH	0.5		0.5		0.6		0.7				ns	2
Data-in valid to K, K# rising edge	^t DVKH	0.4		0.5		0.6		0.7				ns	2
Hold Times													
K rising edge to address hold	^t KHAX	0.5		0.5		0.6		0.7				ns	2
K rising edge to control inputs hold	^t KHIX	0.5		0.5		0.6		0.7				ns	2
K, K# rising edge to data-in hold	^t KHDX	0.4		0.5		0.6		0.7				ns	2

- NOTE:**
1. This parameter is sampled.
 2. This is a synchronous device. All addresses, data and control lines must meet the specified setup and hold times for all latching clock edges.
 3. Test conditions as specified with the output loading as shown in Figure 1 unless otherwise noted.
 4. Control input signals may not be operated with pulse widths less than ^tKHKL (MIN).
 5. If C, C# are tied HIGH, K, K# become the references for C, C# timing parameters.
 6. Transition is measured ±100mV from steady state voltage.
 7. ^tCHQX1 is greater than ^tCHQZ at any given voltage and temperature.

AC TEST CONDITIONS

Input pulse levels	0.25V to 1.25V
Input rise and fall times	0.3ns
Input timing reference levels	0.75V
Output reference levels	$V_{DDQ}/2$
ZQ for 50 Ω impedance	250 Ω
Output load	See Figure 1

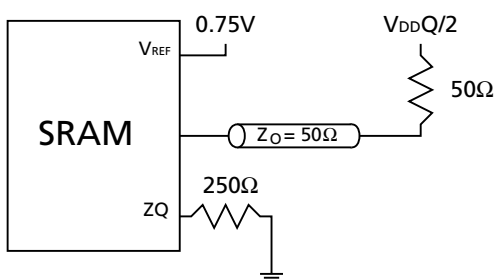
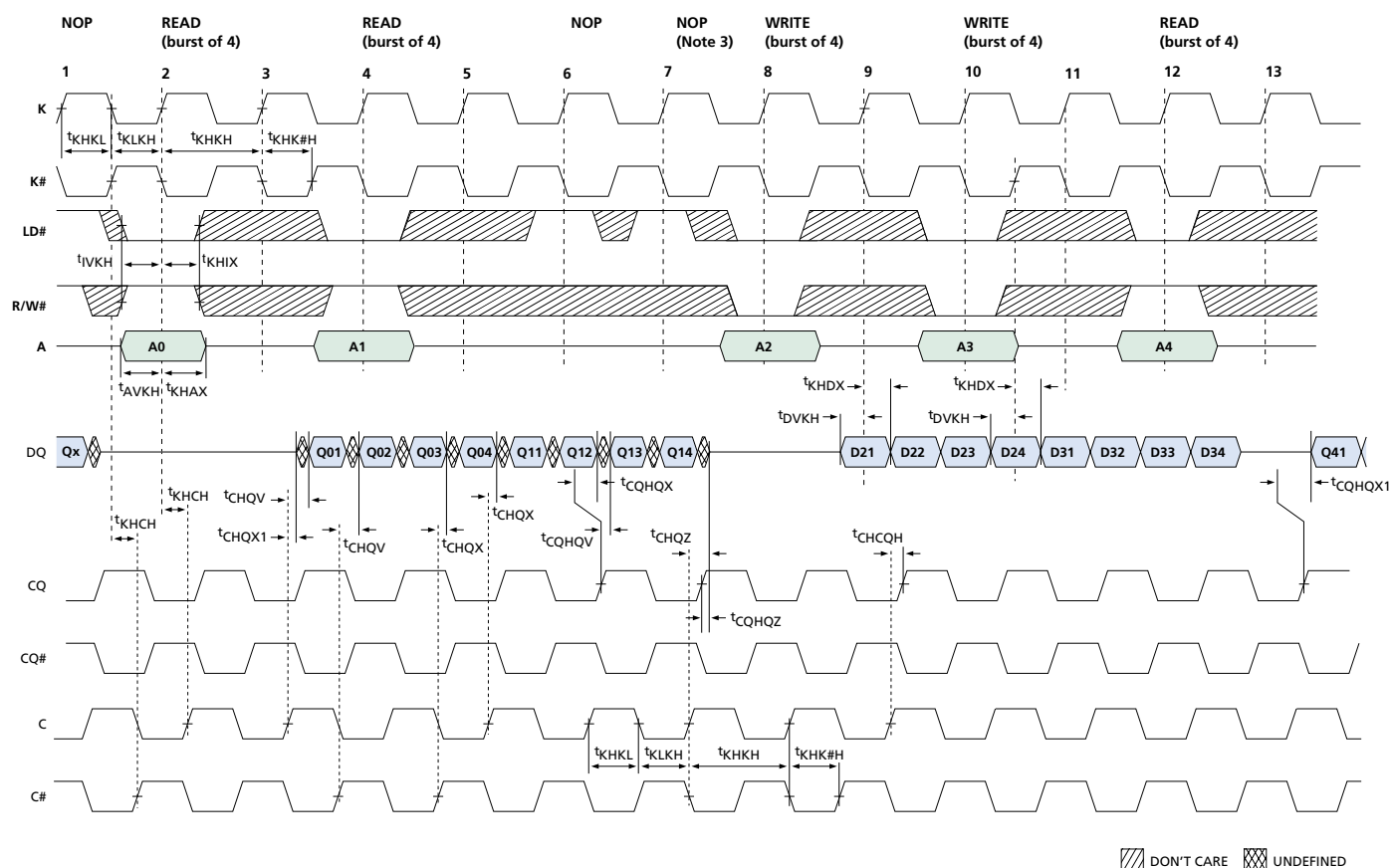


Figure 1
Output Load Equivalent

READ/WRITE TIMING



- NOTE:**
1. Q01 refers to output from address A0. Q02 refers to output from the next internal burst address following A0, etc.
 2. Outputs are disabled (High-Z) one clock cycle after a NOP.
 3. The second NOP cycle is not necessary for correct device operation; however, at high clock frequencies it may be required to prevent bus contention.

IEEE 1149.1 SERIAL BOUNDARY SCAN (JTAG)

The DDR SRAM incorporates a serial boundary scan test access port (TAP). This port operates in accordance with IEEE Standard 1149.1-1990 but does not have the set of functions required for full 1149.1 compliance. These functions from the IEEE specification are excluded because their inclusion places an added delay in the critical speed path of the SRAM. Note that the TAP controller functions in a manner that does not conflict with the operation of other devices using 1149.1 fully compliant TAPs. The TAP operates using JEDEC-standard 2.5V I/O logic levels.

The SRAM contains a TAP controller, instruction register, boundary scan register, bypass register, and ID register.

DISABLING THE JTAG FEATURE

It is possible to operate the SRAM without using the JTAG feature. To disable the TAP controller, TCK must be tied LOW (V_{ss}) to prevent clocking of the device. TDI and TMS are internally pulled up and may be unconnected. They may alternately be connected to V_{DD} through a pull-up resistor. TDO should be left unconnected. Upon power-up, the device will come up in a reset state which will not interfere with the operation of the device.

TEST ACCESS PORT (TAP)

TEST CLOCK (TCK)

The test clock is used only with the TAP controller. All inputs are captured on the rising edge of TCK. All outputs are driven from the falling edge of TCK.

TEST MODE SELECT (TMS)

The TMS input is used to give commands to the TAP controller and is sampled on the rising edge of TCK. It is allowable to leave this pin unconnected if the TAP is not used. The pin is pulled up internally, resulting in a logic HIGH level.

TEST DATA-IN (TDI)

The TDI pin is used to serially input information into the registers and can be connected to the input of any of the registers. The register between TDI and TDO is chosen by the instruction that is loaded into the TAP instruction register. For information on loading the instruction register, see Figure 2. TDI is internally pulled up and can be unconnected if the TAP is unused in an application. TDI is connected to the most significant bit (MSB) of any register. (See Figure 3.)

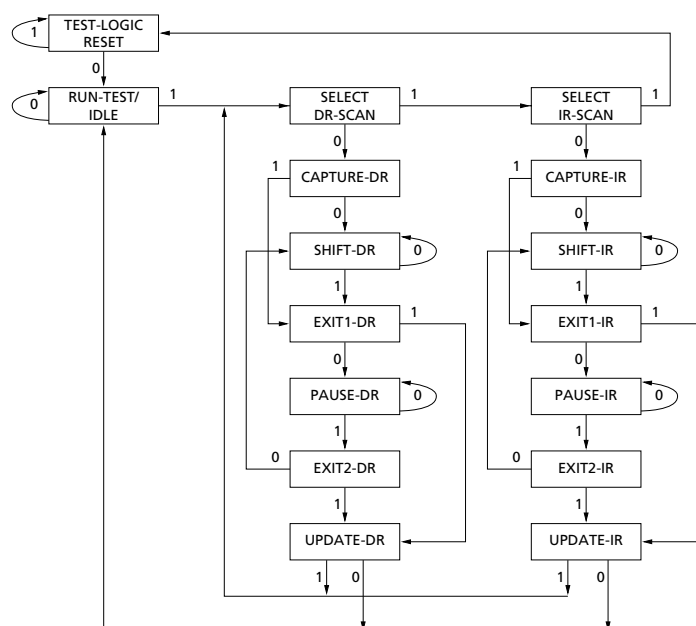


Figure 2
TAP Controller State Diagram

NOTE: The 0/1 next to each state represents the value of TMS at the rising edge of TCK.

TEST DATA-OUT (TDO)

The TDO output pin is used to serially clock data-out from the registers. The output is active depending upon the current state of the TAP state machine. (See Figure 2.) The output changes on the falling edge of TCK. TDO is connected to the least significant bit (LSB) of any register. (See Figure 3.)

PERFORMING A TAP RESET

A RESET is performed by forcing TMS HIGH (V_{DD}) for five rising edges of TCK. This RESET does not affect the operation of the SRAM and may be performed while the SRAM is operating.

At power-up, the TAP is reset internally to ensure that TDO comes up in a High-Z state.

TAP REGISTERS

Registers are connected between the TDI and TDO pins and allow data to be scanned into and out of the SRAM test circuitry. Only one register can be selected at a time through the instruction register. Data is serially loaded into the TDI pin on the rising edge of TCK. Data is output on the TDO pin on the falling edge of TCK.

INSTRUCTION REGISTER

Three-bit instructions can be serially loaded into the instruction register. This register is loaded when it is placed between the TDI and TDO pins as shown in Figure 3. Upon power-up, the instruction register is loaded with the IDCODE instruction. It is also loaded with the IDCODE instruction if the controller is placed in a reset state as described in the previous section.

When the TAP controller is in the Capture-IR state, the two least significant bits are loaded with a binary "01" pattern to allow for fault isolation of the board-level serial test data path.

BYPASS REGISTER

To save time when serially shifting data through registers, it is sometimes advantageous to skip certain chips. The bypass register is a single-bit register that can be placed between the TDI and TDO pins. This allows data to be shifted through the SRAM with minimal delay. The bypass register is set LOW (V_{ss}) when the BYPASS instruction is executed.

BOUNDARY SCAN REGISTER

The boundary scan register is connected to all the input and bidirectional pins on the SRAM. Several no connect (NC) pins are also included in the scan register to reserve pins. The SRAM has a 69-bit-long register.

The boundary scan register is loaded with the contents of the RAM I/O ring when the TAP controller is in the Capture-DR state and is then placed between the TDI and TDO pins when the controller is moved to the Shift-DR state. The EXTEST, SAMPLE/PRELOAD, and SAMPLE Z instructions can be used to capture the contents of the I/O ring.

The Boundary Scan Order tables show the order in which the bits are connected. Each bit corresponds to one of the pins on the SRAM package. The MSB of the register is connected to TDI, and the LSB is connected to TDO.

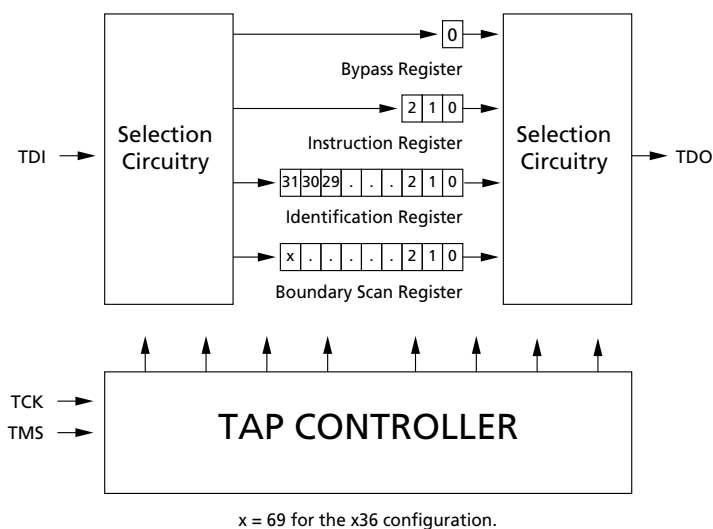


Figure 3
TAP Controller Block Diagram

IDENTIFICATION (ID) REGISTER

The ID register is loaded with a vendor-specific, 32-bit code during the Capture-DR state when the IDCODE command is loaded in the instruction register. The IDCODE is hardwired into the SRAM and can be shifted out when the TAP controller is in the Shift-DR state. The ID register has a vendor code and other information described in the Identification Register Definitions table.

TAP INSTRUCTION SET

OVERVIEW

Eight different instructions are possible with the three-bit instruction register. All combinations are listed in the Instruction Codes table. Three of these instructions are listed as RESERVED and should not be used. The other five instructions are described in detail below.

The TAP controller used in this SRAM is not fully compliant to the 1149.1 convention because some of the mandatory 1149.1 instructions are not fully implemented. The TAP controller cannot be used to load address, data or control signals into the SRAM and cannot preload the I/O buffers. The SRAM does not implement the 1149.1 commands EXTEST or INTEST or the PRELOAD portion of SAMPLE/PRELOAD; rather it performs a capture of the I/O ring when these instructions are executed.

Instructions are loaded into the TAP controller during the Shift-IR state when the instruction register is placed between TDI and TDO. During this state, instructions are shifted through the instruction register through the TDI and TDO pins. To execute the instruction once it is shifted in, the TAP controller needs to be moved into the Update-IR state.

EXTEST

EXTEST is a mandatory 1149.1 instruction which is to be executed whenever the instruction register is loaded with all 0s. EXTEST is not implemented in the TAP controller, hence this device is not IEEE 1149.1 compliant.

The TAP controller does recognize an all-0 instruction. When an EXTEST instruction is loaded into the instruction register, the SRAM responds as if a SAMPLE/PRELOAD instruction has been loaded. EXTEST does not place the SRAM outputs in a High-Z state, CQ, CQ#.

IDCODE

The IDCODE instruction causes a vendor-specific, 32-bit code to be loaded into the instruction register. It also places the instruction register between the TDI and TDO pins and allows the IDCODE to be shifted out of the device when the TAP controller enters the Shift-DR

state. The IDCODE instruction is loaded into the instruction register upon power-up or whenever the TAP controller is given a test logic reset state.

SAMPLE Z

The SAMPLE Z instruction causes the boundary scan register to be connected between the TDI and TDO pins when the TAP controller is in a Shift-DR state. It also places all SRAM outputs into a High-Z state, including CQ, CQ#.

SAMPLE/PRELOAD

SAMPLE/PRELOAD is a 1149.1 mandatory instruction. The PRELOAD portion of this instruction is not implemented, so the device TAP controller is not fully 1149.1-compliant.

When the SAMPLE/PRELOAD instruction is loaded into the instruction register and the TAP controller is in the Capture-DR state, a snapshot of data on the inputs and bi-directional pins is captured in the boundary scan register.

The user must be aware that the TAP controller clock can only operate at a frequency up to 10 MHz, while the SRAM clock operates more than an order of magnitude faster. Because there is a large difference in the clock frequencies, it is possible that during the Capture-DR state, an input or output will undergo a transition. The TAP may then try to capture a signal while in transition (metastable state). This will not harm the device, but there is no guarantee as to the value that will be captured. Repeatable results may not be possible.

To guarantee that the boundary scan register will capture the correct value of a signal, the SRAM signal must be stabilized long enough to meet the TAP controller's capture setup plus hold time (t_{CS} plus t_{CH}). The SRAM clock input might not be captured correctly if there is no way in a design to stop (or slow) the clock during a SAMPLE/PRELOAD instruction. If this is an issue, it is still possible to capture all other signals and simply ignore the value of the CK and CK# captured in the boundary scan register.

Once the data is captured, it is possible to shift out the data by putting the TAP into the Shift-DR state. This places the boundary scan register between the TDI and TDO pins.

Note that since the PRELOAD part of the command is not implemented, putting the TAP to the Update-DR state while performing a SAMPLE/PRELOAD instruction will have the same effect as the Pause-DR command.

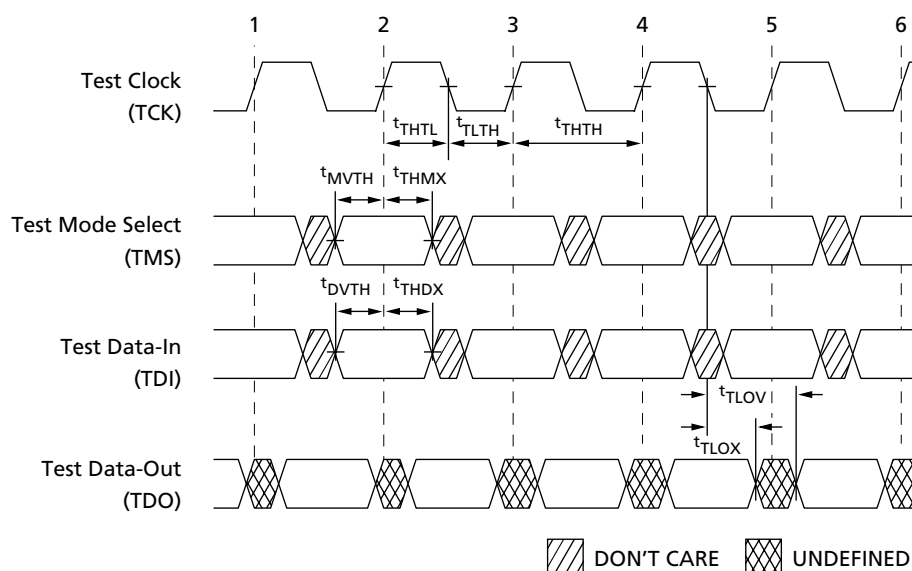
BYPASS

When the BYPASS instruction is loaded in the instruction register and the TAP is placed in a Shift-DR state, the bypass register is placed between TDI and TDO. The advantage of the BYPASS instruction is that it shortens the boundary scan path when multiple devices are connected together on a board.

RESERVED

These instruction are not implemented but are reserved for future use. Do not use these instructions.

TAP TIMING



TAP AC ELECTRICAL CHARACTERISTICS

(Notes 1, 2) (+20°C ≤ T_J ≤ +100°C, +2.4V ≤ V_{DD} ≤ +2.6V)

DESCRIPTION	SYMBOL	MIN	MAX	UNITS
Clock				
Clock cycle time	t _{THTH}	100		ns
Clock frequency	f _{TF}		10	MHz
Clock HIGH time	t _{THTL}	40		ns
Clock LOW time	t _{TLTH}	40		ns
Output Times				
TCK LOW to TDO unknown	t _{TLOX}	0		ns
TCK LOW to TDO valid	t _{TLOV}		20	ns
TDI valid to TCK HIGH	t _{DVTH}	10		ns
TCK HIGH to TDI invalid	t _{THDX}	10		ns
Setup Times				
TMS setup	t _{MVTH}	10		ns
Capture setup	t _{CS}	10		ns
Hold Times				
TMS hold	t _{THMX}	10		ns
Capture hold	t _{CH}	10		ns

NOTE: 1. t_{CS} and t_{CH} refer to the setup and hold time requirements of latching data from the boundary scan register.
 2. Test conditions are specified using the load in Figure 4.

TAP AC TEST CONDITIONS

Input pulse levels	V _{ss} to 2.5V
Input rise and fall times	1ns
Input timing reference levels	1.25V
Output reference levels	1.25V
Test load termination supply voltage	1.25V

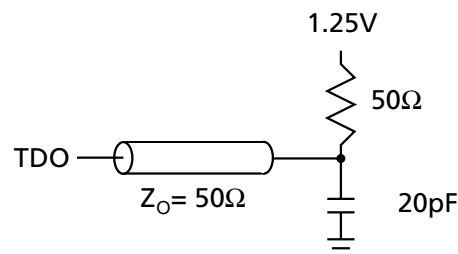


Figure 4
Tap AC Output Load Equivalent

TAP DC ELECTRICAL CHARACTERISTICS AND OPERATING CONDITIONS

(+20°C ≤ T_J ≤ 110°C, +2.4V ≤ V_{DD} ≤ +2.6V unless otherwise noted)

DESCRIPTION	CONDITIONS	SYMBOL	MIN	MAX	UNITS	NOTES
Input High (Logic 1) Voltage		V _{IH}	1.7	V _{DD} + 0.3	V	1, 2
Input Low (Logic 0) Voltage		V _{IL}	-0.3	0.7	V	1, 2
Input Leakage Current	0V ≤ V _{IN} ≤ V _{DD}	I _{LI}	-5.0	5.0	μA	
Output Leakage Current	Output(s) disabled, 0V ≤ V _{IN} ≤ V _{DDQ}	I _{LO}	-5.0	5.0	μA	
Output Low Voltage	I _{OLC} = 100μA	V _{OL1}		0.2	V	1
Output Low Voltage	I _{OLT} = 2mA	V _{OL2}		0.7	V	1
Output High Voltage	I _{OH} C = 100μA	V _{OH1}	2.1		V	1
Output High Voltage	I _{OH} T = 2mA	V _{OH2}	1.7		V	1

NOTE: 1. All voltages referenced to V_{ss} (GND).

2. Overshoot: V_{IH} (AC) ≤ V_{DD} + 1.5V for t ≤ 'KHKH/2

Undershoot: V_{IL} (AC) ≥ -0.5V for t ≤ 'KHKH/2

Power-up: V_{IH} ≤ +2.6V and V_{DD} ≤ 2.4V and V_{DDQ} ≤ 1.4V for t ≤ 200ms

During normal operation, V_{DDQ} must not exceed V_{DD}. Control input signals (such as LD#, R/W#, etc.) may not have pulse widths less than 'KHKL (MIN) or operate at frequencies exceeding 'KF (MAX).

IDENTIFICATION REGISTER DEFINITIONS

INSTRUCTION FIELD	256K x 36	DESCRIPTION
REVISION NUMBER (31:29)	000	Reserved for version number.
DEVICE ID (28:12)	00010100011000000	Defines 256K x 36 DDR 4-word burst.
DEVICE WIDTH (22:18)	00100	Defines width of x36 bits.
MICRON DEVICE ID (17:12)	xxxxxx	Reserved for future use.
MICRON JEDEC ID CODE (11:1)	00000101100	Allows unique identification of SRAM vendor.
ID Register Presence Indicator (0)	1	Indicates the presence of an ID register.

SCAN REGISTER SIZES

REGISTER NAME	BIT SIZE (x36)
Instruction	3
Bypass	1
ID	32
Boundary Scan	69

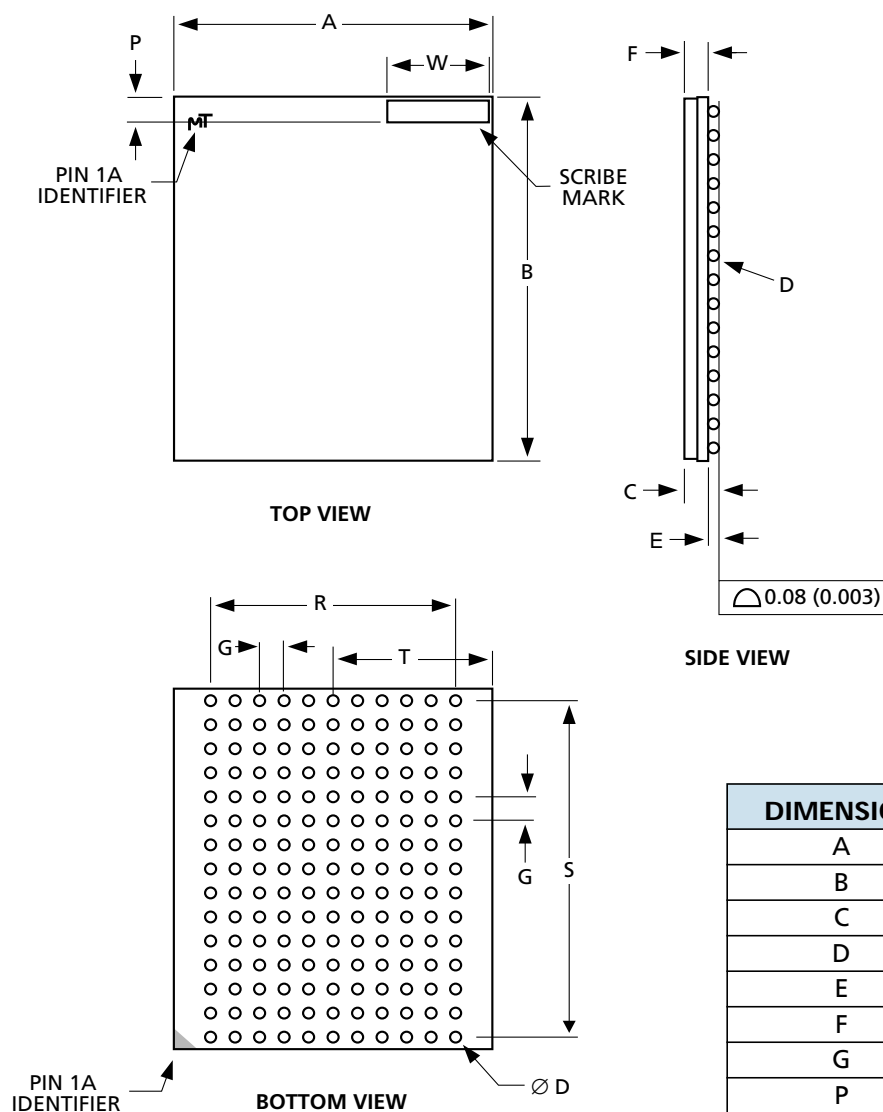
INSTRUCTION CODES

INSTRUCTION	CODE	DESCRIPTION
EXTEST	000	Captures I/O ring contents. Places the boundary scan register between TDI and TDO. This instruction is not 1149.1-compliant. This operation does not affect SRAM operations.
IDCODE	001	Loads the ID register with the vendor ID code and places the register between TDI and TDO. This operation does not affect SRAM operations.
SAMPLE Z	010	Captures I/O ring contents. Places the boundary scan register between TDI and TDO. Forces all SRAM output drivers to a High-Z state.
RESERVED	011	Do Not Use: This instruction is reserved for future use.
SAMPLE/PRELOAD	100	Captures I/O ring contents. Places the boundary scan register between TDI and TDO. This instruction does not implement 1149.1 preload function and is therefore not 1149.1-compliant.
RESERVED	101	Do Not Use: This instruction is reserved for future use.
RESERVED	110	Do Not Use: This instruction is reserved for future use.
BYPASS	111	Places the bypass register between TDI and TDO. This operation does not affect SRAM operations.

Boundary Scan (Exit) Order

BIT#	SIGNAL NAME	PIN ID
1	C#	6R
2	C	6P
3	SA	6N
4	SA	7P
5	SA	7N
6	SA	7R
7	SA	8R
8	SA	8P
9	SA	9R
10	DQ0	10P
11	DQ1	11P
12	DQ2	11N
13	DQ3	10M
14	DQ4	11M
15	DQ5	11L
16	DQ6	10K
17	DQ7	11K
18	DQ8	11J
19	ZQ	11H
20	DQ9	10J
21	DQ10	11G
22	DQ11	11F
23	DQ12	10E
24	DQ13	11E
25	DQ14	11D
26	DQ15	10C
27	DQ16	11C
28	DQ17	11B
29	CQ	11A
30	GND/SA20	10A; reads as 0
31	NC/SA18	9A; reads as 1
32	SA	8B
33	SA1	7C
34	SA0	6C
35	LD#	8A

BIT#	SIGNAL NAME	PIN ID
36	NC	7B; reads as X
37	K	6B
38	K#	6A
39	NC	5A; reads as X
40	R/W#	4A
41	SA	5C
42	SA	4B
43	NC/A19	3A; reads as 1
44	GND/A21	2A; reads as 0
45	CQ#	1A
46	DQ18	3B
47	DQ19	2B
48	DQ20	3C
49	DQ21	3D
50	DQ22	2D
51	DQ23	3E
52	DQ24	3F
53	DQ25	2F
54	DQ26	2G
55	DQ27	3G
56	DQ28	3J
57	DQ29	3K
58	DQ30	3L
59	DQ31	2L
60	DQ32	3M
61	DQ33	3N
62	DQ34	2N
63	DQ35	3P
64	SA	3R
65	SA	4R
66	SA	4P
67	SA	5P
68	SA	5N
69	SA	5R

165-PIN FBGA

DIMENSIONS

DIMENSION	mm	INCHES	NOTE
A	13.0±0.1		
B	15.0±0.1		
C	1.20		Max
D	0.45±0.05		
E	0.45		Max
F	0.850±0.075		
G	1.00		Typical
P	1.00		Typical
R	10.00		Typical
S	14.00		Typical
T	6.50		Typical
W	4.40		Max

- NOTE:**
1. Controlling dimensions are metric.
 2. Molding dimensions do not include protrusion; allowable mold protrusion is 0.25mm per side.
 3. Dimensions apply to solder balls post reflow



8000 S. Federal Way, P.O. Box 6, Boise, ID 83707-0006, Tel: 208-368-3900

 E-mail: prodmarkt@micron.com, Internet: <http://www.micron.com>, Customer Comment Line: 800-932-4992

Micron is a registered trademark of Micron Technology, Inc.